

SERVICE PARTS LIST

ELECTRONIC COMPUTERICE COOKER



Model : KS-ZT18V
KS-COM18V
KS-COM19V

Destination : VIETNAM

Date : 06 - Jan - 16

Revision : 00

Page : 7

 07-01-59	 06-01-59
Approved by.	Checked by.

SERVICE PARTS LIST

REF. NO.	PARTS CODE (S/C)	SAP MATERIAL	DESCRIPTION	OLD MATERIAL	BASE Q'TY	PRICE
-------------	---------------------	-----------------	-------------	-----------------	--------------	-------

PRINTING & PACKAGING MATERIAL

1-1	99Y22A101VG//	510000000224	CARTON BOX	Z2A101VG	100	
-----	---------------	--------------	------------	----------	-----	--

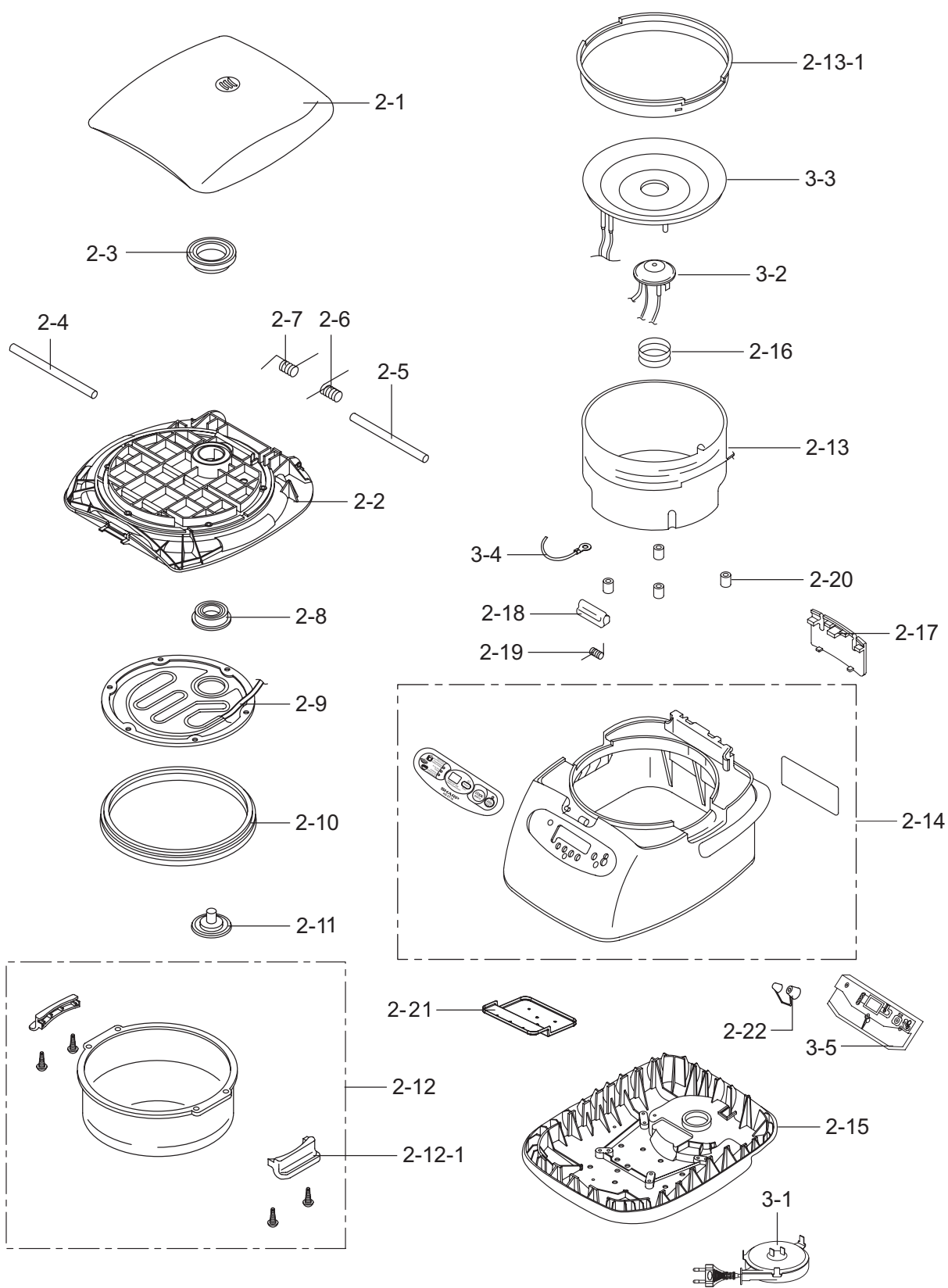
MECHANICAL PARTS

2-1	99Y22A107LG//	100000004974	LID GRAY	Z22A107LG	100	
2-2	99Y22A108LG//	100000004972	LID COVER GRAY	Z22A108LG	100	
2-3	99Y21A1201///	100000001584	UPPER STEAM PACKING	Z21A1201	100	
2-4	99Y22A116////	100000001606	SUPPORT PIN	Z22A116	100	
2-5	99Y21A1171///	100000001581	HINGE PIN	Z21A1171	100	
2-6	99Y22A119////	100000001608	HINGE SPRING-L	Z22A119	100	
2-7	99Y22A118////	100000001607	HINGE SPRING-R	Z22A118	100	
2-8	99Y21A121////	100000001585	STEAM CAP PACKING	Z21A121	100	
2-9	99Y22A109TASY	100000003418	INNER LID ASSY	Z22A109TASY	100	
2-10	99Y22A2061///	100000001609	INNER LID PACKING	Z22A2061	100	
2-11	99Y21A122////	100000000823	STEAM CAP	Z21A122	100	
2-12	99Y22A2041ASY	100000000852	INNER POT ASSY	Z22A2041ASY	100	
2-12-1	99Y21A205ASY/	100000003416	INNER POT HANDLE ASSY GRAY	Z21A205ASY	100	
2-13	99Y22A301BASY	100000003419	OUTER POT ASSY	Z22A301BASY	100	
2-13-1	99Y22A3021///	100000001379	UPPER RING	Z22A3021	100	
2-14	99Y22A101VGAS	100000004973	BODY ASSY	Z22A101VGASY	100	
2-15	99Y22A201LG//	100000004975	BOTTOM COVER GRAY	Z22A201LG	100	
2-16	99Y21A3151///	100000001587	THERMISTOR SPRING	Z21A3151	100	
2-17	99Y21A1041///	100000001818	HINGE COVER GRAY	Z21A1041	100	
2-18	99Y21A105////	100000001580	LATCH BUTTON GRAY	Z21A105	100	
2-19	99Y22N3071///	100000001619	LATCH SPRING	Z22N3071	100	
2-20	99Y21A202////	100000000826	BOTTOM SPACER	Z21A202	100	
2-21	99Y21M313////	100000001377	REFLECTING BOTTOM PLATE	Z21M313	100	
2-22	99Y22A402////	100000001610	KEY TOP COVER	Z22A402	100	

ELECTRIC PARTS

3-1	99Y2C5014RASY	100000000917	CORD REEL ASSY	Z2C5014RASY	100	
3-2	99Y22A312TASY	100000000855	THERMISTOR PLATE ASSY	Z22A312TASY	100	
3-3	99Y22A3061TAS	100000000854	HEATER PLATE ASSY	Z22A3061TASY	100	
3-4	99YW07A060XC/	100000001530	L-WIRE-WHITE @1.00/1-60MM+1C	ZW07A060XC	100	
3-5	99Y21A4011TAS	100000001588	PCB ASSY	Z21A4011TASY	100	

KS-ZT18V



SERVICE PARTS LIST

<i>REF.</i>	<i>PARTS CODE</i>	<i>SAP</i>	<i>DESCRIPTION</i>	<i>OLD</i>	<i>BASE</i>	<i>PRICE</i>
<i>NO.</i>	<i>(S/C)</i>	<i>MATERIAL</i>		<i>MATERIAL</i>	<i>Q'TY</i>	

PRINTING & PACKAGING MATERIAL

1-1	99Y22N1011V//	510000000235	CARTON BOX	Z22N1011V	100	
-----	---------------	--------------	------------	-----------	-----	--

MECHANICAL PARTS

2-1	99Y22N209LGAS	100000000875	LID CAP ASSY	LIGHT GRAY	Z22N209LGASY	100	
	99Y22N209WHAS	100000000876	LID CAP ASSY	WHITE	Z22N209WHASY	100	
2-2	99Y22N204LG//	100000000870	LID	LIGHT GRAY	Z22N204LG	100	
	99Y22N204W///	100000000871	LID	WHITE	Z22N204W	100	
2-3	99Y22N205LG//	100000000872	LID COVER	LIGHT GRAY	Z22N205LG	100	
	99Y22N205W///	100000000873	LID COVER	WHITE	Z22N205W	100	
2-4	99Y22N303////	100000000883	INNER LID SPRING		Z22N303	100	
2-5	99Y22N501////	100000001620	UPPER STEAM PACKING		Z22N501	100	
2-6	99Y22N302ASY/	100000000882	HOLDER PLATE ASSY		Z22N302ASY	100	
2-7	99Y22N2141GAS	100000000880	INNER LID FRAME ASSY	LIGHT GRAY	Z22N2141GASY	100	
	99Y22N2141WAS	100000000881	INNER LID FRAME ASSY	WHITE	Z22N2141WASY	100	
2-8	99Y22N213W///	100000000879	STEAMER RACK		Z22N213W	100	
2-9	99Y22N306ASY/	100000000884	INNER POT ASSY		Z22N306ASY	100	
2-9-1	99Y22N208ASY/	100000004611	INNER POT HANDLE ASSY		Z22N208ASY	100	
2-10	99Y22N207VDAS	100000004976	PANEL RING ASSY	DARK GRAY	Z22N207VDASY	100	
	99Y22N207VLAS	100000004977	PANEL RING ASSY	LIGHT GRAY	Z22N207VLASY	100	
2-11	99Y22N203LG//	100000000868	LATCH BUTTON	LIGHT GRAY	Z22N203LG	100	
	99Y22N203W///	100000000869	LATCH BUTTON	WHITE	Z22N203W	100	
2-12	99Y22N3071///	100000001619	LATCH SPRING		Z22N3071	100	
2-13	99Y22N305////	100000001618	HINGE SPRING-R		Z22N305	100	
2-14	99Y22N304////	100000001617	HINGE SPRING-L		Z22N304	100	
2-15	99Y21J117////	100000001595	HINGE PIN		Z21J117	100	
2-16	99Y22N212DG//	100000000877	HINGE COVER	DARK GRAY	Z22N212DG	100	
	99Y22N212LG//	100000000878	HINGE COVER	LIGHT GRAY	Z22N212LG	100	
2-17	99Y22N206////	100000004616	PCB HOLDER		Z22N206	100	
2-18	99Y22N301VASY	100000004978	OUTER POT ASSY		Z22N301VASY	100	
2-19	99Y22J315////	100000004617	THERMISTOR SPRING		Z22J315	100	
2-20	99Y2C217/////	100000000911	CONTACT PLATE COVER		Z2C217	100	
2-21	99Y21J202////	100000000835	SPACER		Z21J202	100	

SERVICE PARTS LIST

<i>REF.</i>	<i>PARTS CODE</i>	<i>SAP</i>	<i>DESCRIPTION</i>	<i>OLD</i>	<i>BASE</i>	<i>PRICE</i>
<i>NO.</i>	<i>(S/C)</i>	<i>MATERIAL</i>		<i>MATERIAL</i>	<i>Q'TY</i>	

MECHANICAL PARTS

2-22	99Y22N201LG//	100000000866	BODY	LIGHT GRAY	Z22N201LG	100	
	99Y22N201W///	100000000867	BODY	WHITE	Z22N201W	100	
2-23	99Y22N202LG//	100000004764	HANDLE	LIGHT GRAY	Z22N202LG	100	
	99Y22N202W///	100000004765	HANDLE	WHITE	Z22N202W	100	

ELECTRIC PARTS

3-1	99Y22N405ASY/	100000000888	CORD REEL ASSY		Z22N405ASY	100	
3-2	99Y22N403ASY/	100000000887	THERMISTOR PLATE ASSY		Z22N403ASY	100	
3-3	99Y22N402////	100000000886	HEATER PLATE ASSY		Z22N402	100	
3-4	99Y22N401SET/	100000000885	PCB SET		Z22N401SET	100	
3-5	99YW07A105XC/	100000001531	LEAD WIRE BAND		ZW07A105XC	100	
3-6	99Y22N404////	100000001381	MAIN EARTH WIRE		Z22N404	100	
3-7	99YE03A300GG/	100000001528	SUB. EARTH WIRE		ZE03A300GG	100	

SERVICE PARTS LIST

REF.	PARTS CODE	SAP	DESCRIPTION	OLD	BASE	PRICE
NO.	(S/C)	MATERIAL		MATERIAL	Q'TY	

PRINTING & PACKAGING MATERIAL

1-1	99Y22N1101V//	510000000240	CARTON BOX	Z22N1101V	100	
-----	---------------	--------------	------------	-----------	-----	--

MECHANICAL PARTS

2-1	99Y22N209LGAS	100000000875	LID CAP ASSY	LIGHT GRAY	Z22N209LGASY	100	
	99Y22N209WHAS	100000000876	LID CAP ASSY	WHITE	Z22N209WHASY	100	
2-2	99Y22N204LG//	100000000870	LID	LIGHT GRAY	Z22N204LG	100	
	99Y22N204W///	100000000871	LID	WHITE	Z22N204W	100	
2-3	99Y22N205LG//	100000000872	LID COVER	LIGHT GRAY	Z22N205LG	100	
	99Y22N205W///	100000000873	LID COVER	WHITE	Z22N205W	100	
2-4	99Y22N303////	100000000883	INNER LID SPRING		Z22N303	100	
2-5	99Y22N501////	100000001620	UPPER STEAM PACKING		Z22N501	100	
2-6	99Y22N302ASY/	100000000882	HOLDER PLATE ASSY		Z22N302ASY	100	
2-7	99Y22N2141GAS	100000000880	INNER LID FRAME ASSY	LIGHT GRAY	Z22N2141GASY	100	
	99Y22N2141WAS	100000000881	INNER LID FRAME ASSY	WHITE	Z22N2141WASY	100	
2-8	99Y22N213W///	100000000879	STEAMER RACK		Z22N213W	100	
2-9	99Y22N306ASY/	100000000884	INNER POT ASSY		Z22N306ASY	100	
2-9-1	99Y22N208ASY/	100000004611	INNER POT HANDLE ASSY		Z22N208ASY	100	
2-10	99Y22N2071VDA	100000004979	PANEL RING ASSY	DARK GRAY	Z22N2071VDASY	100	
	99Y22N2071VLA	100000004980	PANEL RING ASSY	LIGHT GRAY	Z22N2071VLASY	100	
2-11	99Y22N203LG//	100000000868	LATCH BUTTON	LIGHT GRAY	Z22N203LG	100	
	99Y22N203W///	100000000869	LATCH BUTTON	WHITE	Z22N203W	100	
2-12	99Y22N3071///	100000001619	LATCH SPRING		Z22N3071	100	
2-13	99Y22N305////	100000001618	HINGE SPRING-R		Z22N305	100	
2-14	99Y22N304////	100000001617	HINGE SPRING-L		Z22N304	100	
2-15	99Y21J117////	100000001595	HINGE PIN		Z21J117	100	
2-16	99Y22N212DG//	100000000877	HINGE COVER	DARK GRAY	Z22N212DG	100	
	99Y22N212LG//	100000000878	HINGE COVER	LIGHT GRAY	Z22N212LG	100	
2-17	99Y22N206////	100000004616	PCB HOLDER		Z22N206	100	
2-18	99Y22N301VASY	100000004978	OUTER POT ASSY		Z22N301VASY	100	
2-19	99Y22J315////	100000004617	THERMISTOR SPRING		Z22J315	100	
2-20	99Y2C217/////	100000000911	CONTACT PLATE COVER		Z2C217	100	
2-21	99Y21J202////	100000000835	SPACER		Z21J202	100	

SERVICE PARTS LIST

<i>REF.</i>	<i>PARTS CODE</i>	<i>SAP</i>	<i>DESCRIPTION</i>	<i>OLD</i>	<i>BASE</i>	<i>PRICE</i>
<i>NO.</i>	<i>(S/C)</i>	<i>MATERIAL</i>		<i>MATERIAL</i>	<i>Q'TY</i>	

MECHANICAL PARTS

2-22	99Y22N201LG//	100000000866	BODY	LIGHT GRAY	Z22N201LG	100	
	99Y22N201W///	100000000867	BODY	WHITE	Z22N201W	100	
2-23	99Y22N202LG//	100000004764	HANDLE	LIGHT GRAY	Z22N202LG	100	
	99Y22N202W///	100000004765	HANDLE	WHITE	Z22N202W	100	

ELECTRIC PARTS

3-1	99Y22N405ASY/	100000000888	CORD REEL ASSY		Z22N405ASY	100	
3-2	99Y22N403ASY/	100000000887	THERMISTOR PLATE ASSY		Z22N403ASY	100	
3-3	99Y22N402////	100000000886	HEATER PLATE ASSY		Z22N402	100	
3-4	99Y22N401SET/	100000000885	PCB SET		Z22N401SET	100	
3-5	99YW07A105XC/	100000001531	LEAD WIRE BAND		ZW07A105XC	100	
3-6	99Y22N404////	100000001381	MAIN EARTH WIRE		Z22N404	100	
3-7	99YE03A300GG/	100000001528	SUB. EARTH WIRE		ZE03A300GG	100	

KS-COM18V / KS-COM19V

