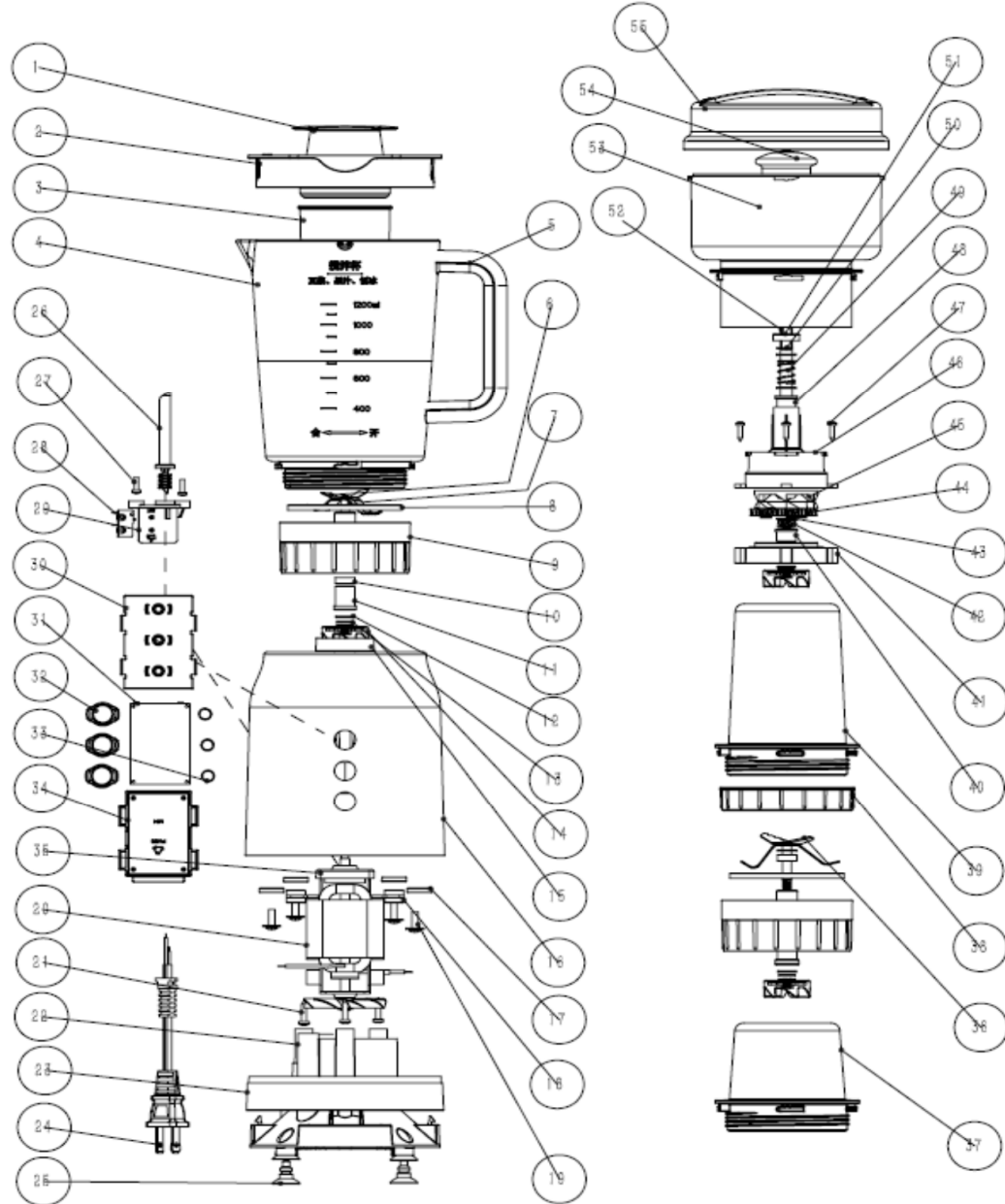


MODEL

BLENDER BLB-5335W

No.	Name/ Specification/ material
1	measuring cup, AS
2	lid of jug, pp
3	filter, ABS+SUS304
4	jug, AS
5	lid of handle, ABS+plating
6	blade, SUS301
7	Wear pad,
8	seal ring of blade, silica gel
9	blade base PP+SUS304
10	inner seal ring silica gel
11	axis of blade base
12	Wear pad SUP orange fiber
13	Big gasket A-grade, SUS304
14	upper connector, Rubber +zinc alloy
15	lower connector
16	mainbody ABS
17	motor pad, POM
18	motor Damping pad , silica gel
19	pan-head self-drilling screw
20	motor
21	Hex self-drilling screw
22	base PP
23	base trimming, ABS+plating
24	power cord
25	Rubber foot , silica gel
26	micro switch connectig bar, POM
27	Cross slots self-drilling screw
28	micro switch
29	micro switch support ABS
30	cover of circuit board, PA66+30%GF
31	circuit board Component
32	buttons ABS
33	micro switch spring , SS
34	lower cover of circuit board, PA66+30%GF
35	Damping pad of motor axis , silica gel
36	powder grinding blade, SUS301
37	powder grinding cup, PC
38	lid of mix cup, PP
39	mix cup, PC
40	axis of gear case base



41	base of gear case , POM
42	Small metal gear, SUS430
43	Big gasket (gradeA) , SUS304
44	lower clutch components
45	upper clutch , Zinc alloy
46	lid of Gear box, POM
47	cross-slots pan-head self-drilling screw
48	axis of gear case lid
49	spring of gear case, SS
50	Card reed, SS
51	clutch cover, SUS304
52	clutch drive rod, SUS301
53	meat chop cup, AS
54	meat chop blade units, ABS+SS blade
55	lid of meat chop cup, AS

1

1

)

)

)