

Service
Service
Service



HR2365/01



HR2369/01

Philips Consumer Lifestyle

Service Manual

Technical Information

- Voltage : 100 V AC
- Frequency rated : 50/60 Hz
- Power rated : 200 W
- Product dimensions(L x D x H) mm : 215 x 343 x 300mm
- Capacity : 500 g

Material(esp. food contact)

- Mixing chamber : AS
- Mixing chamber lid : AS
- Mixing paddle : Al with Teflon Coating
- Disc holder : Compounded PP
- Shaping discs : POM
- Cleaning tool : PCTG

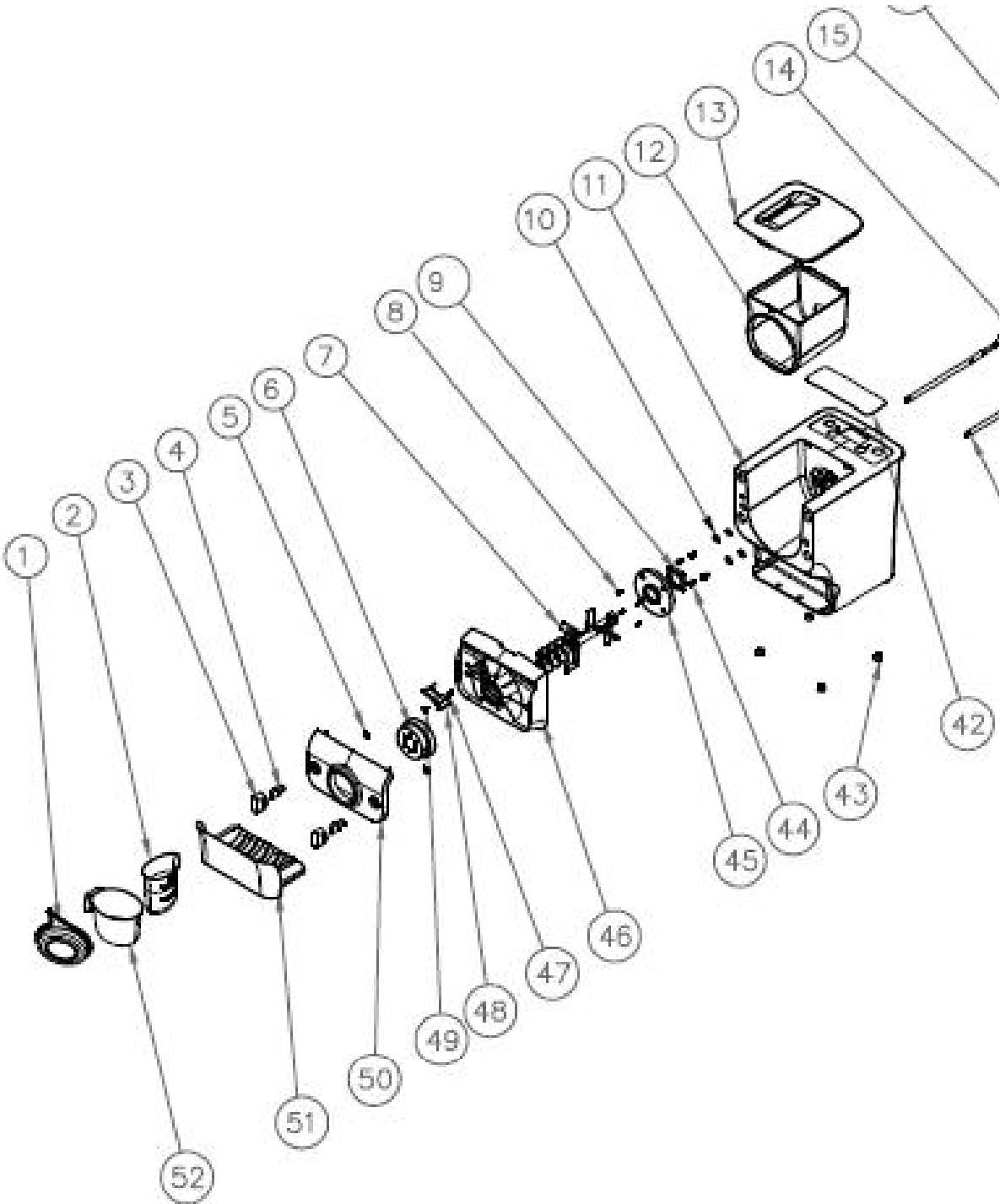
Function

- Auto noodle making process
- Extra extrusion program
- Multiple kneading selection
- Process time display

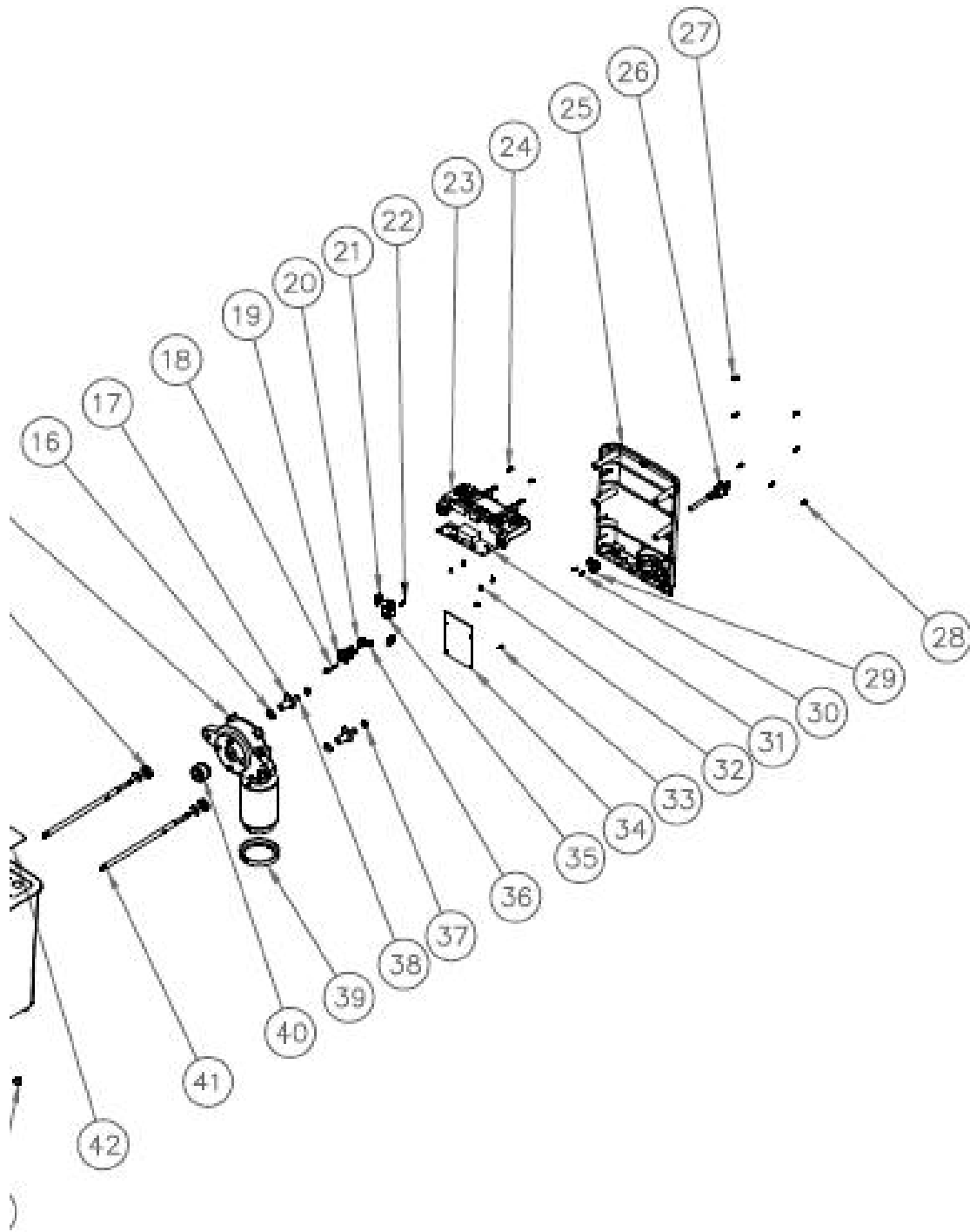
Operating Condition

- Temperature : +10°C to +40° C
- Relative humidity : 20 % to 90% at 40°C (non condensing)

Exploded drawing _ MAIN HOUSING ASSY



Exploded drawing_ Motor & PCBA



Service Parts List

No.	Part code	Description
1	4241 210 15951	CLEANING TOOL 1.6*1.6 Grey
	4241 210 15961	CLEANING TOOL & 2.0 Grey
	4241 210 15971	CLEANING TOOL 2.5*2.5 Grey
	4241 210 15981	CLEANING TOOL 1.6*3.5 Grey
2	4241 210 15941	WATER CUP(Water level)
3, 4	4241 210 12831	SCREW KNOB HE Japan HR2369/01
	4241 210 15861	SCREW KNOB HE Japan grey HR2365/01
5	2522 700 98373	split washer D10*D14*1 mm
6	4241 210 15991	SHARPING MOUTH 1.6
	4241 210 16001	SHARPING MOUTH 2.0
	4241 210 16011	SHARPING MOUTH 2.5
	4241 210 16021	SHARPING MOUTH 1.6*3.5
	4241 210 16031	Wonton skin (0.8) ONLY FOR HR2369/01
7	4241 210 19611	BLENDING BAR Assy
9	4241 210 13241	SEALING ring
11	4241 210 12962	main housing HE(STAR WHITE)
	4241 210 16171	caution sticker
12	4241 210 12921	BLENDING HOUSING HR2369/01
	4241 210 15751	BLENDING HOUSING (Pantone cool grey 7C) HR2365/01
13	4241 210 12871	BLENDING HOUSING COVER HR2369/01
	4241 210 15741	BLENDING HOUSING COVER (Pantone cool grey 7C) HR2365/01
14	4241 210 13021	MOTOR ISOLATOR B
15	4241 210 15881	MOTOR ASSEMBLE/Japan
17	4241 210 13011	MOTOR ISOLATOR A
18	4241 210 13191	SWITCH PIN
19	4241 210 13182	SWITCH HOLDER
21	4241 210 13571	SAFTY SWITCH ASSY
23	4241 210 12941	PCB STANDING PLATE HE
25	4241 210 13062	BACK COVER (STAR WHITE)
26	4241 210 15791	POWER CORD for Japan(white)
29	4241 210 13081	POWER CORD HOLDER
31	4241 210 15901	CONTROL PCBA HR2365/01
34	4241 210 15801	PSU for Japan
35	4241 210 13171	SAFETY SWITCH HOLDER
39	4241 210 13621	Vibration-absorbed pad Rubber
40	4241 210 13031	COUPLING RING
41	4241 210 13271	CONNECTING SHAFT HE
42	4241 210 16081	UI FILM HR2365/01
	4241 210 16131	UI FILM HR2369/01
43	4241 210 13251	RUBBER FOOT(white)
45	4241 210 12991	MOTOR COVER (STAR WHITE)
46	4241 210 12981	MIDDLE ADAPTER (STAR WHITE)
48	4241 210 13201	SAFETY PIN
50	4241 210 15841	FRONT PANEL HE golden HR2065/01
	4241 210 15831	FRONT PANEL HE silver HR2069/01
51	4241 210 15761	Storage box assembling(Japan)
52	4241 210 14951	FLOUR CUP/10
	4241 210 15604	DFU HR2365/01
	4241 210 15614	DFU HR2369/01
	4241 210 15631	F-Box HR2365/01
	4241 210 15641	F-Box HR2369/01
	4241 210 16381	Recipe Book